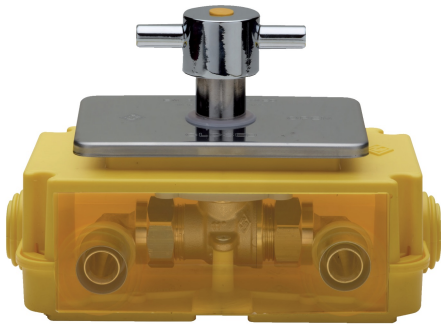


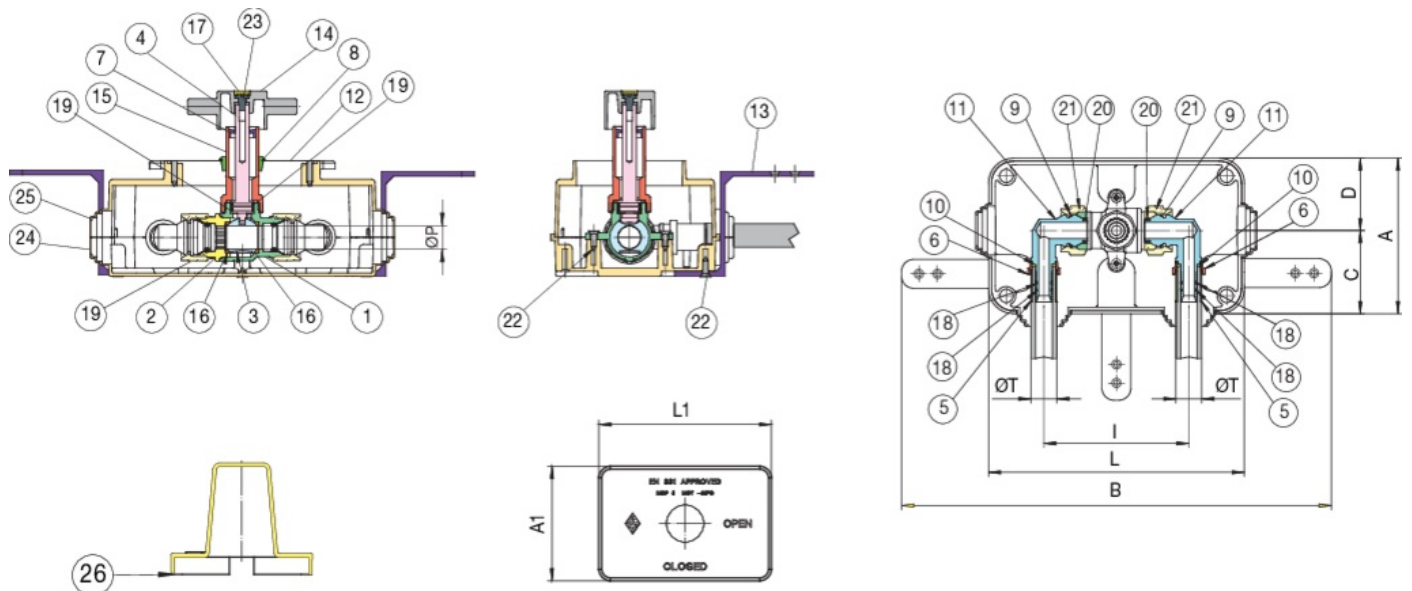
9382

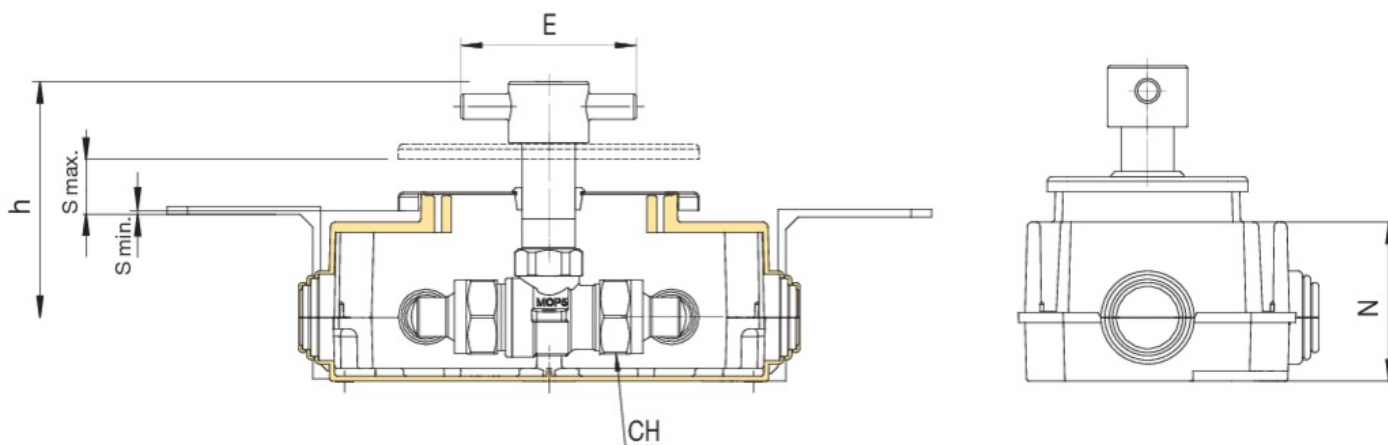
BREVETTATO



Valvola a sfera gas con scatola ispezionabile da incasso a norma UNI 7129 e UNI 11528, attacchi TURBO PRESS gas a squadra, organo di comando maniglia.

Specifiche tecniche





| POSIZIONE | NOME PARTE | MATERIALE | N.° PEZZI |
|-----------|-----------------------|---------------------------|-----------|
| 1 | CORPO | BRASS CW617N UNI EN 12165 | 1 |
| 2 | MANICOTTO | BRASS CW614N UNI EN 12164 | 1 |
| 3 | SFERA | BRASS CW617N UNI EN 12165 | 1 |
| 4 | ASTA | BRASS CW614N UNI EN 12164 | 1 |
| 5 | BUSSOLA | STAINLESS STEEL AISI 304 | 2 |
| 6 | GHIERA | PP | 2 |
| 7 | GHIERA | BRASS CW614N UNI EN 12164 | 1 |
| 8 | GUARNIZIONE COPERCHIO | POLYETHYLENE | 1 |
| 9 | ANELLO D'ARRESTO | STEEL | 1 |
| 10 | GUARNIZIONE PIANA | PE | 2 |
| 11 | RACCORDO | BRASS CW617N UNI EN 12165 | 2 |
| 12 | PIASTRA | STAINLESS STEEL AISI 430 | 1 |
| 13 | ZANCA | POM | 3 |
| 14 | FARFALLA | ZAMA\G Zn Al14 ALLOY | 1 |
| 15 | SUPPORTO | BRASS CW614N UNI EN 12164 | 1 |
| 16 | GUARNIZIONE SFERA | PTFE | 2 |
| 17 | TAPPO | ABS | 1 |
| 18 | O-RING | NBR | 2 |
| 19 | O-RING | HNBR | 4 |
| 20 | O-RING | HNBR | 2 |
| 21 | DADO | BRASS CW617N UNI EN 12165 | 2 |
| 22 | VITE | STEEL | 5 |
| 23 | VITE | BRASS CW614N UNI EN 12164 | 1 |
| 24 | SCATOLA ISPEZIONABILE | HIPS | 1 |
| 25 | SCATOLA ISPEZIONABILE | HIPS | 1 |
| 26 | CARTER | ABS | 1 |

| MISURA | BOX | MASTER BOX | CODICE | ØT | ØP | A | A1 | B | C | D | E | H | L | CH | L | L1 | N | S MIN | S MAX | KG |
|--------|-----|------------|------------|----|----|-----|----|-----|----|----|----|------|-----|----|-----|-----|------|-------|-------|------|
| 16 | 1 | 4 | 9382160000 | 16 | 15 | 109 | 80 | 299 | 58 | 51 | 70 | 94,5 | 101 | 30 | 178 | 120 | 62,5 | 1,5 | 20,5 | 1,00 |
| 20 | 1 | 4 | 9382200000 | 20 | 15 | 109 | 80 | 299 | 58 | 51 | 70 | 94,5 | 101 | 30 | 178 | 120 | 62,5 | 1,5 | 20,5 | 1,00 |

Include la valvola [938 C](#).

Applicazioni



GAS

