

502400

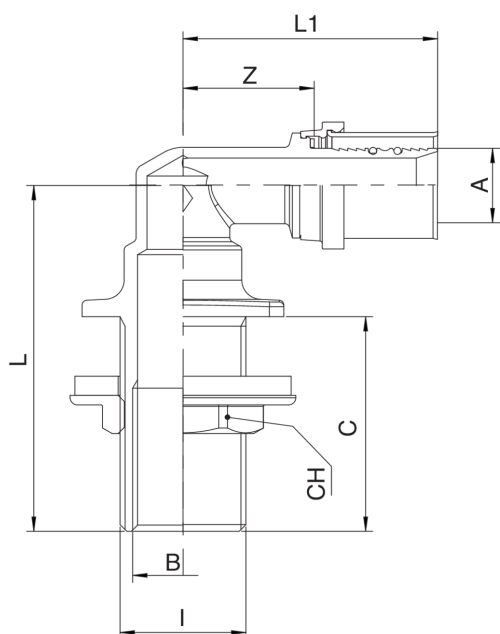
BREVETTATO



Curva 90° femmina per pareti sottili filettata maschio/femmina.



Specifiche tecniche



A X B X C	SP	BAG	BOX	MASTER BOX	CODICE	I	CH	L	L1	Z
16 x 1/2" x 18	2	1	15	60	502400160418	G 3/4"	30	45,5	53	27
16 x 1/2" x 30	2	1	15	60	502400160430	G 3/4"	30	57,5	53	27
16 x 1/2" x 45	2	1	10	40	502400160445	G 3/4"	30	72,5	53	27
20 x 1/2" x 18	2	1	15	60	502400200418	G 3/4"	30	45,5	53	27
20 x 1/2" x 30	2	1	15	60	502400200430	G 3/4"	30	57,5	53	27
20 x 1/2" x 45	2	1	10	40	502400200445	G 3/4"	30	72,5	53	27

Applicazioni



DRINKING
WATER



HEATING



HVAC



COMPRESSED
AIR



INDUSTRIAL



MARINE