

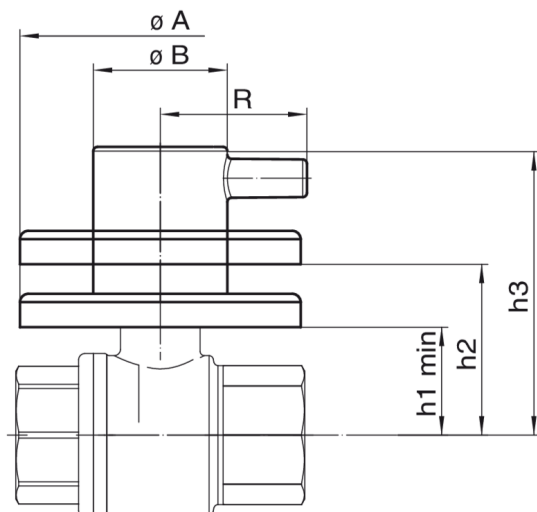
## 43F2

Leva 1 piolo e rosone cromati per artt. 4291-4391-4491-509091.



**NEW**

### Specifiche tecniche



ART.	DN	BOX	MASTER BOX	CODICE	ØA	ØB	H1 MIN	H2	H3	KG
4291	1/2"	10	40	43F2040000	67	32	23	38	66	0,08
4291	3/4"	10	40	43F2040000	67	32	26	41	69	0,08
4391	1/2"	10	40	43F2040000	67	32	22,5	37,5	66	0,08
4391	3/4"	10	40	43F2040000	67	32	26	41	69	0,08
4391	1"	10	40	43F2040000	67	32	29,5	44,5	73	0,08
4491	1/2"	10	40	43F2040000	67	32	27	42	70	0,08
4491	3/4"	10	40	43F2040000	67	32	32,5	47,5	75	0,08
509091	16-18-20-26	10	40	43F2040000	67	32	22,5	37,5	66	0,08

## Applicazioni



DRINKING  
WATER



HEATING



HVAC



COMPRESSED  
AIR



INDUSTRIAL



MARINE