

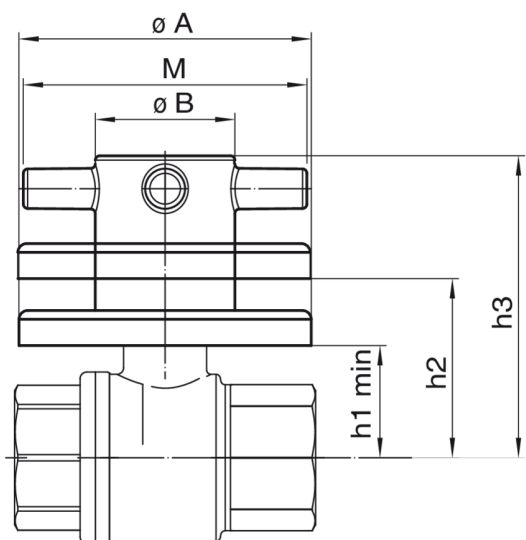
43F1

Leva 4 pioli e rosone cromati per artt. 4291-4391-4491-509091.



NEW

Specifiche tecniche



| ART. | DN | BOX | MASTER BOX | CODICE | ØA | ØB | M | H1 MIN | H2 | H3 | KG |
|--------|-------------|-----|------------|------------|----|----|----|--------|------|----|------|
| 4291 | 1/2" | 10 | 40 | 43F1040000 | 67 | 32 | 65 | 23 | 38 | 66 | 0,09 |
| 4291 | 3/4" | 10 | 40 | 43F1040000 | 67 | 32 | 65 | 26 | 41 | 69 | 0,09 |
| 4391 | 1/2" | 10 | 40 | 43F1040000 | 67 | 32 | 65 | 22,5 | 37,5 | 66 | 0,09 |
| 4391 | 3/4" | 10 | 40 | 43F1040000 | 67 | 32 | 65 | 26 | 41 | 69 | 0,09 |
| 4391 | 1" | 10 | 40 | 43F1040000 | 67 | 32 | 65 | 29,5 | 44,5 | 73 | 0,09 |
| 4491 | 1/2" | 10 | 40 | 43F1040000 | 67 | 32 | 65 | 27 | 42 | 70 | 0,09 |
| 4491 | 3/4" | 10 | 40 | 43F1040000 | 67 | 32 | 65 | 32,5 | 47,5 | 75 | 0,09 |
| 509091 | 16-18-20-26 | 10 | 40 | 43F1040000 | 67 | 32 | 65 | 22,5 | 37,5 | 66 | 0,09 |

Applicazioni



DRINKING
WATER



HEATING



HVAC



COMPRESSED
AIR



INDUSTRIAL



MARINE