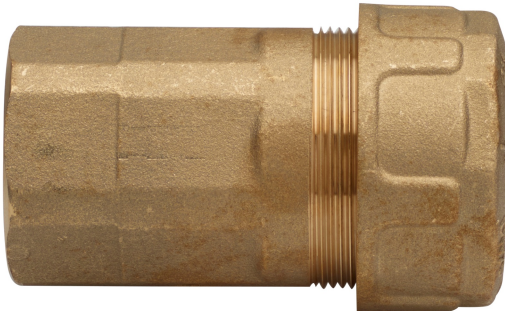
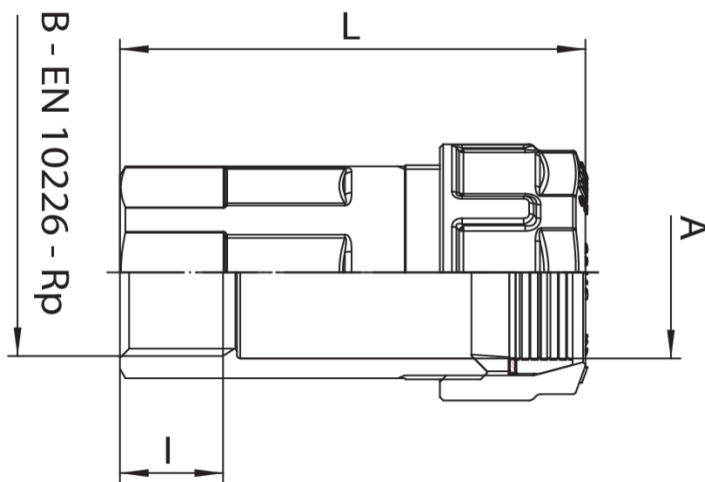


## 5F0100



Raccord compression droit femelle de connexion et à travers-trou, avec joint en élastomère à section trapézoïdale jusqu'à PN50/MOP5.

### Spécifications techniques



| A X B         | BOX | MASTER BOX | CODE     | I    | L   |
|---------------|-----|------------|----------|------|-----|
| 3/8" x 3/8"   | 22  | 176        | 5F010003 | 11,4 | 58  |
| 1/2" x 1/2"   | 18  | 144        | 5F010004 | 15   | 68  |
| 3/4" x 3/4"   | 12  | 96         | 5F010005 | 16,3 | 74  |
| 1" x 1"       | 9   | 72         | 5F010006 | 19,1 | 79  |
| 1"1/4 x 1"1/4 | 6   | 24         | 5F010007 | 21,4 | 89  |
| 1"1/2 x 1"1/2 | 6   | 24         | 5F010008 | 21,4 | 95  |
| 2" x 2"       | 3   | 12         | 5F010010 | 25,7 | 104 |

# Applications

---



DRINKING  
WATER



GAS