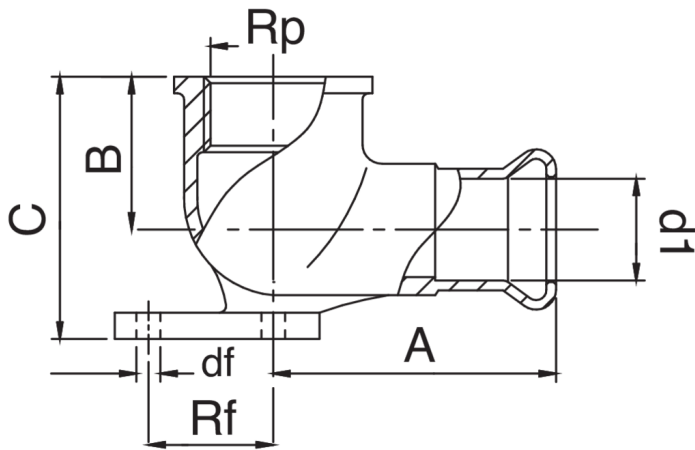


Applique coude 90° F/filetage femelle en bronze.

Spécifications techniques



D1 X RP	BAG	MASTER BOX	CODE	A	B	C	DF	RF
12 x 1/2"	10	80	QM8471A12012000	40	22	34	4,2	16
15 x 1/2"	10	80	QM8471A12015000	40	24	34	4,2	16
18 x 1/2"	5	70	QM8471A12018000	40	24	38	4,2	16
22 x 3/4"	5	40	QM8471A34022000	48	26	46	4,2	18

Applications



COMPRESSED
AIR



GAS



INDUSTRIAL