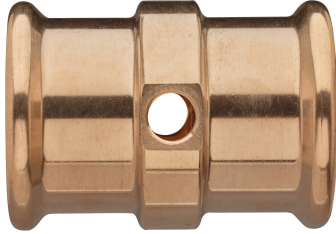
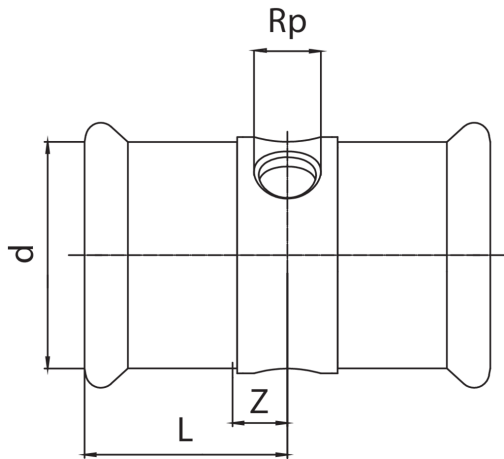


T multirosca H/rosca hembra/H de bronce.



Especificaciones técnicas



D X RP	BAG	MASTER BOX	CÓDIGO	L	Z
66,7 x 1/2"	1	4	RB8135067A12067	65	15
76,1 x 1/2"	1	4	RB8135076A12076	65	14
88,9 x 3/4"	1	1	RB8135089A34089	80	18
108 x 3/4"	1	1	RB8135108A34108	85	18

Aplicaciones



DRINKING
WATER



HEATING



HVAC



COMPRESSED
AIR



FIREFIGHTING