

504500

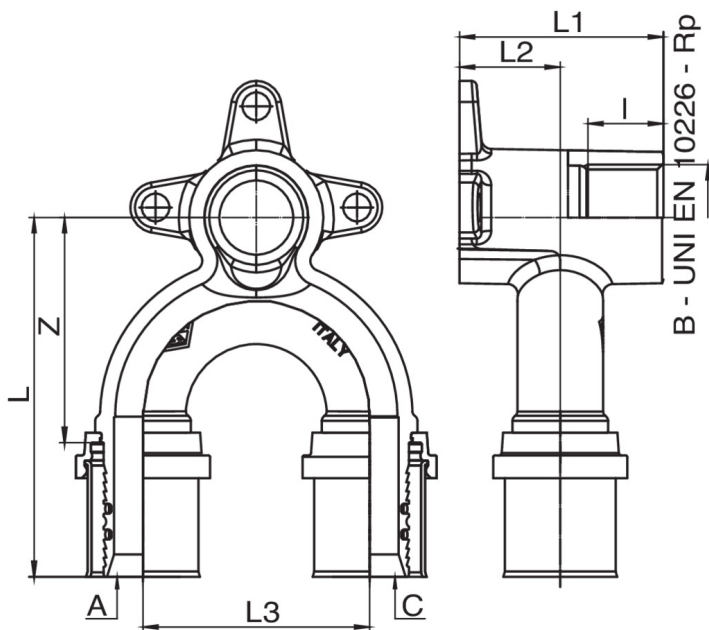
PATENTED



Wallplate elbow U-shaped 180°.



Technical specifications



| A X B X C | SP | BAG | BOX | MASTER BOX | CODE | I | L | L1 | L2 | L3 | Z | KG |
|----------------|----|-----|-----|------------|--------------|----|----|------|----|----|------|------|
| 16 x 1/2" x 16 | 2 | 5 | 10 | 40 | 504500160416 | 15 | 71 | 40,5 | 20 | 45 | 44,5 | 0,23 |
| 20 x 1/2" x 20 | 2 | 5 | 10 | 40 | 504500200420 | 15 | 71 | 40,5 | 20 | 45 | 44,5 | 0,25 |

Applications



DRINKING WATER



HEATING



HVAC



COMPRESSED AIR



INDUSTRIAL



MARINE