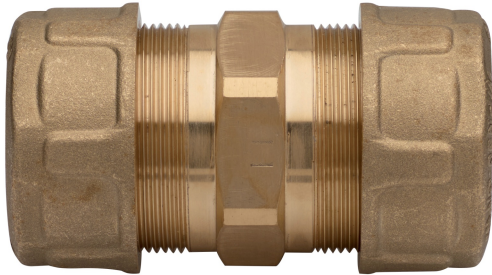
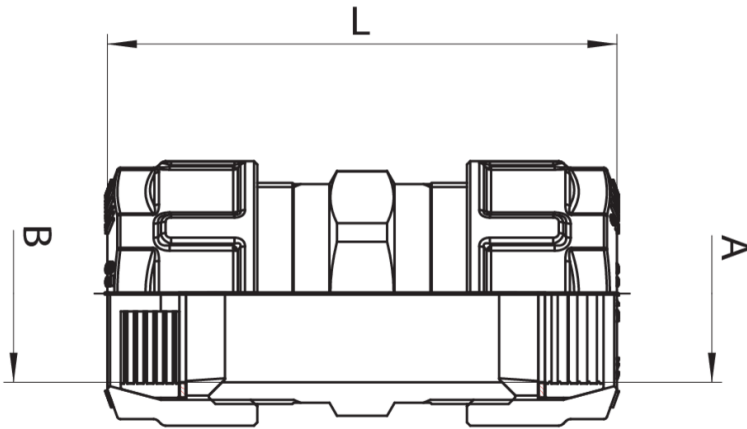


## 5F0200



Double loop quick-assembling compression fitting with elastomer seal with a trapezoidal section up to PN50/MOP5.

### Technical specifications



A X B	BOX	MASTER BOX	CODE	L
3/8" x 3/8"	15	120	5F020003	65
1/2" x 1/2"	15	120	5F020004	70
3/4" x 3/4"	10	80	5F020005	78
1" x 1"	6	48	5F020006	84
1"1/4 x 1"1/4	6	24	5F020007	92
1"1/2 x 1"1/2	6	24	5F020008	96
2" x 2"	3	12	5F020010	104

# Applications

---



DRINKING  
WATER



GAS