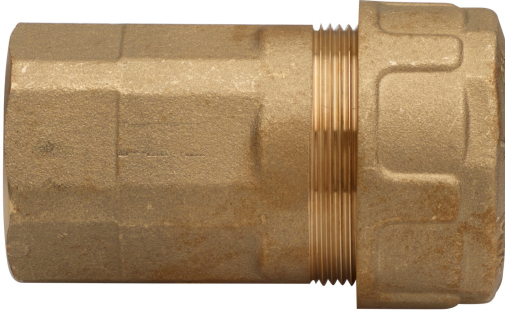
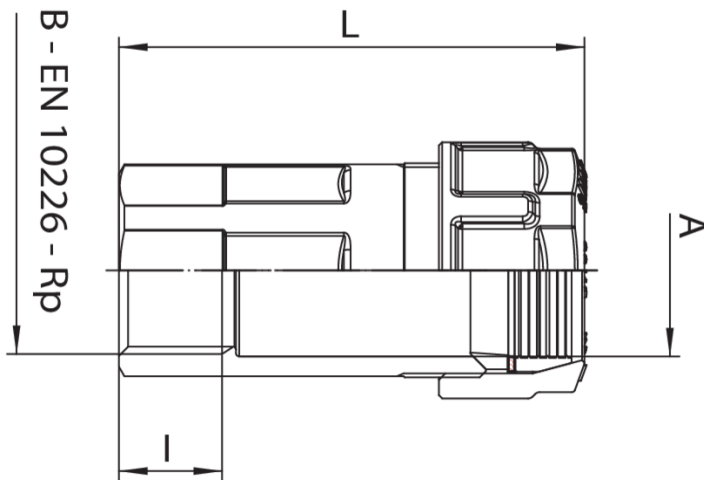


5F0100



Straight female quick-assembling compression fitting with elastomer seal with a trapezoidal section up to PN50/MOP5.

Technical specifications



A X B	BOX	MASTER BOX	CODE	I	L
3/8" x 3/8"	22	176	5F010003	11,4	58
1/2" x 1/2"	18	144	5F010004	15	68
3/4" x 3/4"	12	96	5F010005	16,3	74
1" x 1"	9	72	5F010006	19,1	79
1"1/4 x 1"1/4	6	24	5F010007	21,4	89
1"1/2 x 1"1/2	6	24	5F010008	21,4	95
2" x 2"	3	12	5F010010	25,7	104

Applications



DRINKING
WATER



GAS