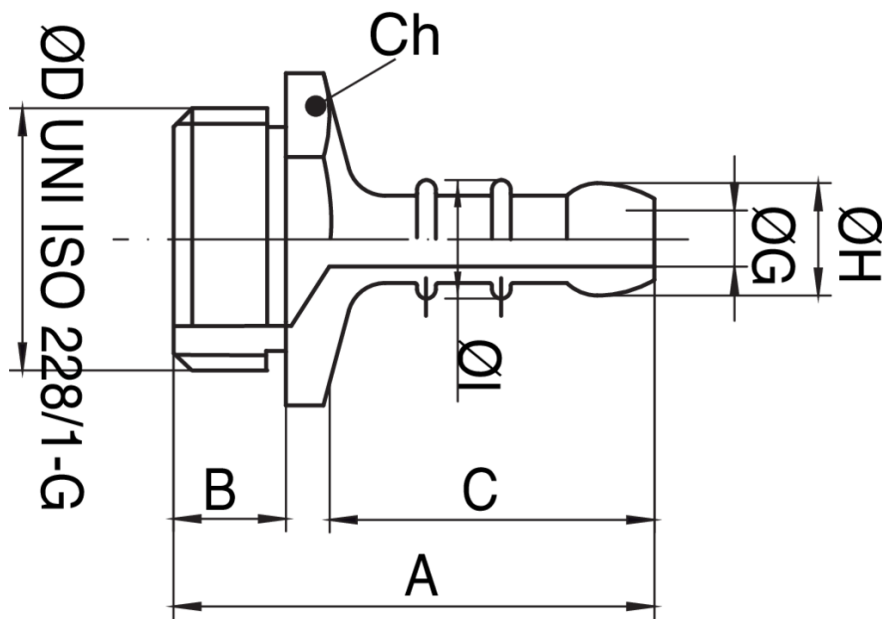


9594

Fitting with hose tail for liquid gas, male threaded, nickel plated.

Technical specifications



| SIZE | BOX | MASTER BOX | CODE | A | B | C | ØG | ØH | ØI | CH |
|------|-----|------------|------------|------|-----|----|-----|----|-----|----|
| 3/8" | 50 | 400 | 9594030000 | 37 | 8,5 | 26 | 4,5 | 9 | 9,5 | 19 |
| 1/2" | 50 | 400 | 9594040000 | 38,5 | 9 | 26 | 4,5 | 9 | 9,5 | 23 |

Applications



DRINKING
WATER



GAS

