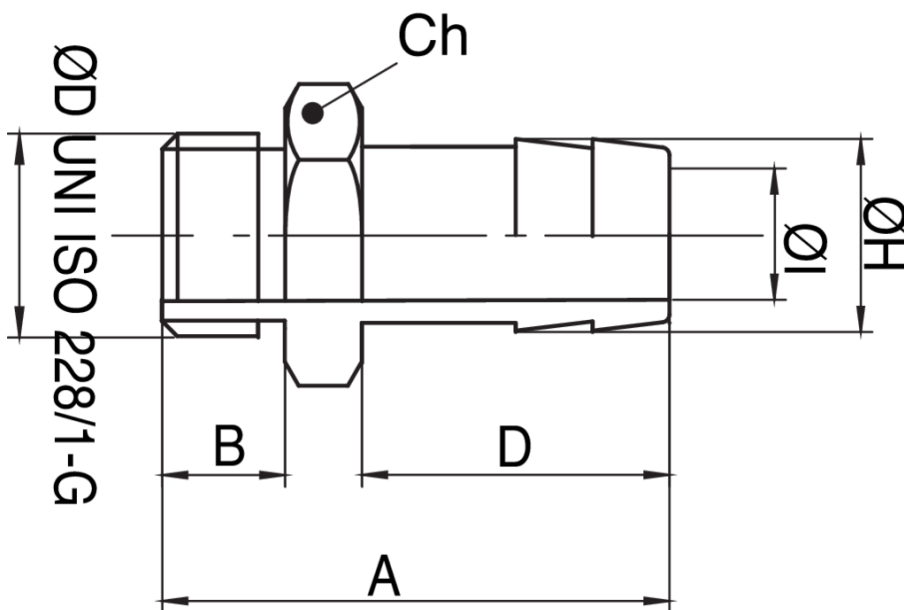


9593

Fitting with hose tail, male threaded, nickel plated.

Technical specifications



SIZE	BOX	MASTER BOX	CODE	A	B	D	ØH	ØI	CH
1/8"	50	400	9593010000	29	6	20	9,5	6	12
1/4"	50	400	9593020000	33	8	20	12,5	8,5	17
3/8"	50	400	9593030000	36	8,5	24	13,5	9	19
1/2"	50	400	9593040000	40	9	27	15,5	11	23

Applications



