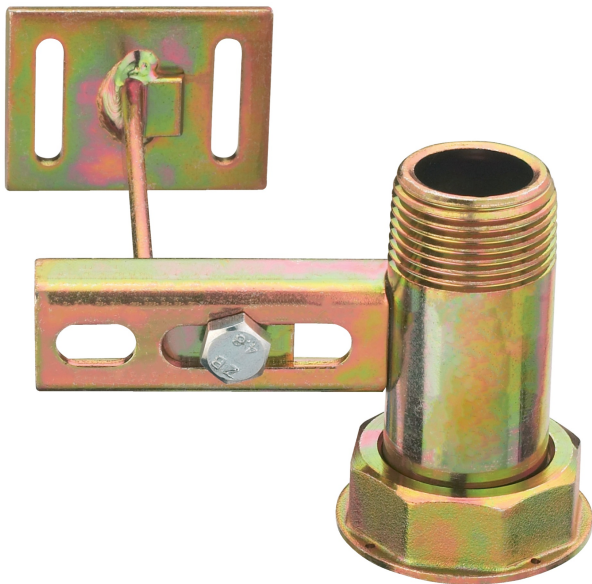
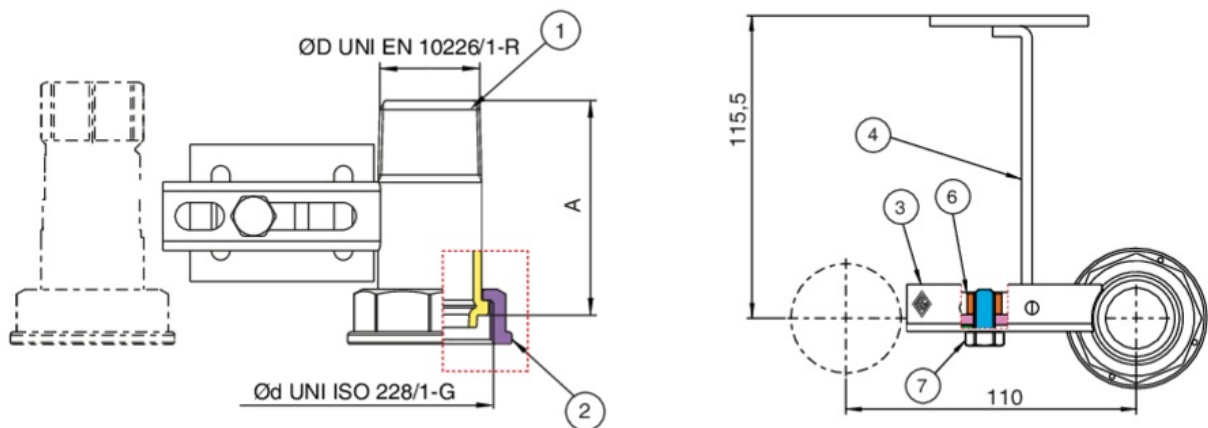


9F05

Steel cross beam, center distance 110 mm, with threaded union tail EN 10226-1 and fixing plate h.115 for raw plugs.



Technical specifications



ØD X ØD	MASTER BOX	CODE	A
1/2" x 3/4"	25	9F05260000	63
1/2" x 1"1/4"	25	9F05790000	74
1" x 1"1/4"	25	9F05290000	70,5

Applications



GAS