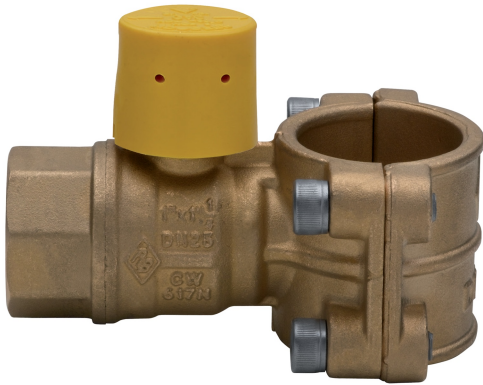
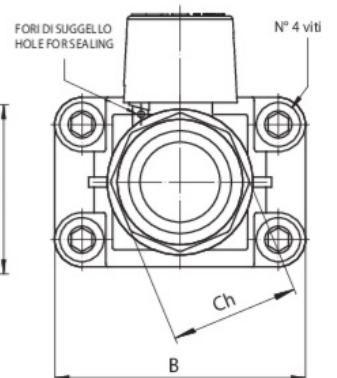
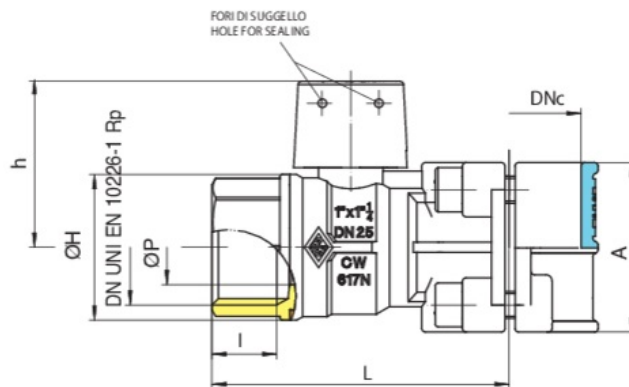
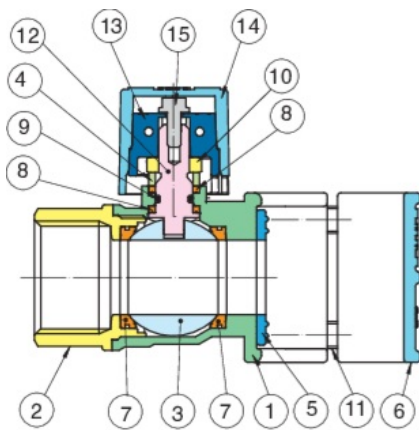


9052

Full bore gas ball valve for iron rising pipe connection, one side female threaded, sizes 1" x 1" to 1 1/2" x 2".



Technical specifications



POSITION	PART NAME	MATERIAL	N.° PIECES
1	BODY	BRASS CW617N UNI EN 12165	1
2	END CONNECTION	BRASS CW617N UNI EN 12165	1
3	BALL	BRASS CW617N UNI EN 12165	1
4	PACKING GLAND	BRASS CW614N UNI EN 12164	1
5	SEAL	FKM	1
6	SUPPORT	BRASS CW617N UNI EN 12165	1
7	BALL SEAT	PTFE	2
8	STEM SEAL/THRUST WASHER	PTFE	2
9	O-RING	NBR	1
10	NUT	STEEL CL 04	1
11	SCREW	STEEL A2	4
12	STEM	BRASS CW614N UNI EN 12164	1
13	CAP	ZAMA/G ZN Al4 ALLOY	1
14	LOCKABLE CAP	PE	1
15	SCREW	STEEL CL 4.8	1

DN X DNC	DN	BOX	MASTER BOX	CODE	N°4 VITI/SCREW	I	L	ØH	H	CH	A	B	MOP	KG
1" x 1"	25	10	20	9052060025	M8 X 25	19,1	83,5	43	55	38	50	64	5	0,76
1" x 1"1/4	25	8	16	9052060032	M8 X 25	19,1	88	43	59	38	50	74	5	0,81
1" x 1"1/2	25	8	16	9052060040	M8 X 25	19,1	91,5	43	69,5	38	50	84	5	0,90
1"1/2 x 2"	40	4	8	9052080050	M8 X 35	21,4	116	73	75,5	54	64	92	5	2,06

Temperature range: -20°C +60°C.

Applications



GAS