

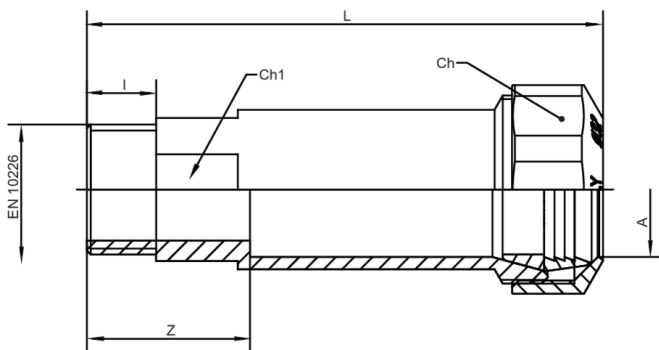
588700

Long straight male fitting with patented quick connection.



NEW

Technical specifications



| A X B | BOX | MASTER BOX | CODE | I | CH | CH1 | L | Z |
|-------------|-----|------------|------------|------|----|-----|-----|----|
| 25 x 3/4" | 15 | 60 | 5887002505 | 15 | 41 | 28 | 100 | 45 |
| 32 x 1" | 8 | 32 | 5887003206 | 17 | 51 | 35 | 123 | 40 |
| 40 x 1 1/4" | 5 | 20 | 5887004007 | 18,5 | 59 | 44 | 123 | 40 |
| 50 x 1 1/2" | 2 | 8 | 5887005008 | 19 | 70 | 54 | 123 | 40 |
| 63 x 2" | 2 | 8 | 5887006310 | 22 | 87 | 68 | 123 | 48 |

Applications

