

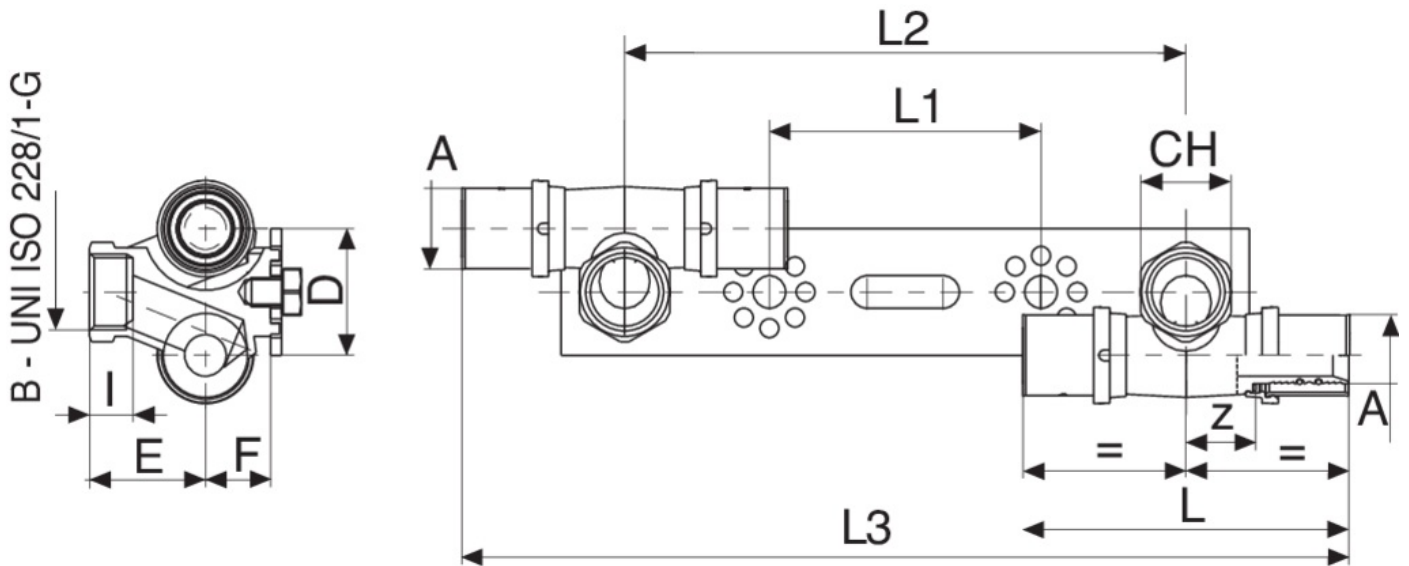
504000

PATENTED

Montageplatte mit 2 gegeneinander verdrehten Fittings.



Technische Spezifikationen



A X B	SP	BAG	BOX	MASTER BOX	CODE	I	CH	D	E	F	L	L1	L2	L3	Z
16 x 1/2"	2	1	4	16	504000160416	12	25	35	32	18	90	75	155	245	19,5
18 x 1/2"	2	1	4	16	504000180418	12	25	35	32	18	90	75	155	245	19,5
20 x 1/2"	2	1	4	16	504000200420	12	25	35	32	18	90	75	155	245	19,5

Anwendungen



DRINKING
WATER



HEATING



HVAC



COMPRESSED
AIR



INDUSTRIAL



MARINE