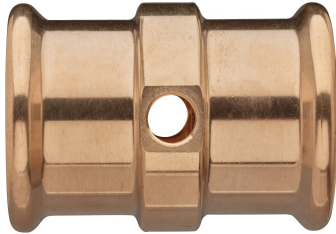
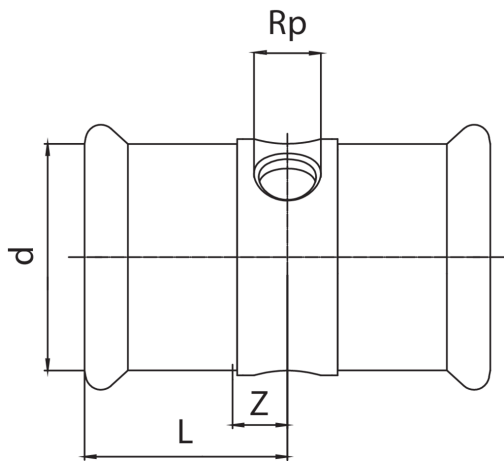


T-Stück mit Gewindebohrung aus Rotguss



## Technische Spezifikationen



| D X RP      | BAG | MASTER BOX | CODE            | L  | Z  |
|-------------|-----|------------|-----------------|----|----|
| 66,7 x 1/2" | 1   | 4          | RB8135067A12067 | 65 | 15 |
| 76,1 x 1/2" | 1   | 4          | RB8135076A12076 | 65 | 14 |
| 88,9 x 3/4" | 1   | 1          | RB8135089A34089 | 80 | 18 |
| 108 x 3/4"  | 1   | 1          | RB8135108A34108 | 85 | 18 |

## Anwendungen



DRINKING  
WATER



HEATING



HVAC



COMPRESSED  
AIR



FIREFIGHTING